

Stewards of the Earth; Guardians of God's Gifts: How Has America Thrived?

YEAR 6 SPRING

Welcome back!

It's Spring! Welcome back to what looks to be an incredible term of hard work, success and wonderful memories. We're excited to be continuing our yearly theme of 'Stewards of the Earth; Guardians of God's Gifts'! There promises to be endless dreaming, asking, aspiring, achieving and believing.

Within our annual theme, we will focus our learning this term on '**Stewards of the Earth; Guardians of God's Gifts: How has America thrived?**' This will involve an exploration of Ancient Mayan life, with a particular focus on Central America and its relationship with North America in terms of climate and migration.

RE will follow the Come and See topics below:

Sources: in which we will explore the resources we use to deepen our spirituality, with a clear focus on the Christian bible.

Unity: in which pupils will deepen their understanding of their church community, and how the Eucharist unites Christians.

Death and New Life: where pupils will learn more about and celebrate Christ's sacrifice and resurrection.

In **English**, Year 6 will continue to familiarise themselves with a range of texts, punctuation and grammar. We will explore these alongside our class read: 'A Series of Unfortunate Events' and 'The Arrival' by Shaun Tan.

Maths will focus on revising all aspects of the curriculum as well as perfecting our arithmetic and written skills, and applying these to a range of problems,

Science will involve a look at the Human Body: how we grow, our heart and how we can keep our bodies healthy with diet. We will explore the Ancient Mayan ways of keeping healthy too!

Computing will link to our continuing theme also. We will design and create Ancient Mayan temples using Minecraft as well as using our programming skills to create Mayan pattern designs in Python.

Art will continue this theme, with pupils exploring printing linked to Mayan pattern and colour. The famous print and pop artist, Andy Warhol, will be our inspiration throughout.

In **PE**, we have the opportunity to develop our confidence and fluency in gymnastics and Dance with Mrs Bathgate, every Friday.

In **Geography**, we will take a look at migration from Central America to North America as well as how climate impacts on flooding.

History will focus on the success and downfall of the Mayan civilization!

KEY DATES

7th Jan: Epiphany Liturgy 2:30pm

13th Jan: Individual Class Photos

W/C 27th Jan: Talent Show Auditions TBC

12th Feb, 2pm: KS2 Talent Show TBC

7th Feb: Safer Internet Day as part of Mental Health Week

14th Feb: Inset Day

24th Feb: Back to School!

5th Mar, 9am: Ash Wednesday Mass in Church

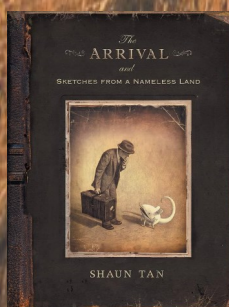
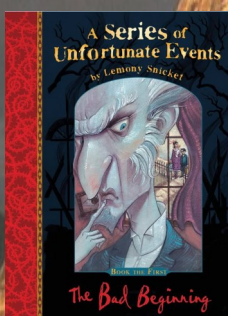
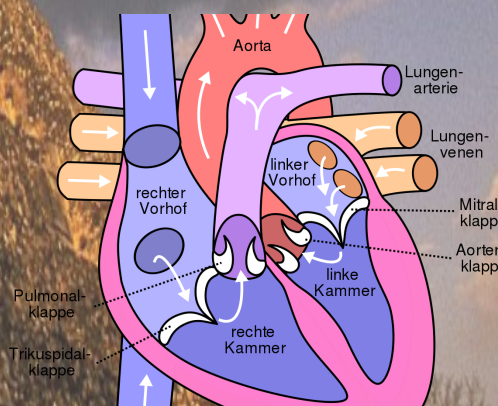
5th Mar: World Book Day

13th Mar: Music Evening TBC

25th March 4pm-7pm: Parent Consultations

26th March 1.30-3.30pm: Parent Consultations

4th Apr, 2pm: Yr 6 Crucifixion Performance





NATIONAL ASSESSMENTS

As you are already aware, the Year 6 National Assessments are fast approaching. You will be receiving more information about the tests in due course. They will fall on May 12th-15th.

Your child has a Maths and two English CGP revision books as well as SPaG glossary to help them learn key facts and practise the skills they have been taught in class. Please encourage them to use these regularly to help with daily homework, revision and recall of knowledge. They will also continue to have daily homework to help with this.

We will be in touch with further information regarding educational visits and visitors in due course. Watch this space!

Coming soon

RSHE

We will also be spending some dedicated time on **RSHE** again—that's 'Relationship, Sex and Health Education'. We will explore body-image, feelings, and internet safety as well as revisiting and deepening our understanding of different forms of abuse.

How You Can help:

- Ensure your child is wearing **correct uniform** in school. Also, **PE kits** will be needed **every day**. Kits should be appropriate for the season i.e. both outdoor and indoor kits are needed for the winter months. Inhalers must be in school at all times also. Hair should be tied back, and jewellery removed.
- Ensure your child is in school in time for registration (8.50am).
- Check **homework diaries** regularly as they are one of the best methods of communication. They are checked at least once a week on **Mondays**, and must be **signed** by a parent / guardian for this day.
- In Year 6, pupils should become more and more independent at homework. Homework will total 2.5 hours a week, but how this is spread across the week will vary depending on the task and time of year. For example, children may be given a week long project, or short tasks per day, which would be due in the following day to help with classroom learning. There is an opportunity to come into school early from 8.30am to work on homework.
- It is so important that the children know their **number facts** (addition and subtraction facts to 100; multiplication and division facts to 12 x 12). Multiplication, division, addition and subtraction facts are the basis of everything else that is learnt in Maths. Children will have weekly number facts to learn and quizzed on them every Monday.
- Unless learning lines and lyrics, children will have a set of **spellings** to learn most weeks, to be tested in class. Please keep checking them on these when they are set. Writing them down is effective. We will also be sending **handwriting** home most weeks to support children in joining their letters legibly.
- **Encourage** your child to **read everyday**, and ask them questions about the text. Record in their diaries the pages they have read and initial this to enable good communication with home and school. This recording is seen as evidence that they have read every day and is treated as homework, being checked every **Monday**.
- Take a look at Year 6s class page and **blog** for more information! brwacademy.com, and follow us on Facebook!

Finally, your help this term will be invaluable. We'd like to **thank you** in advance for your resolute support in helping your child reach their full potential in their final year at Blessed Robert Widmerpool. We are all looking forward to making it a wonderful year to remember in which they go further than they ever have and really make their mark!